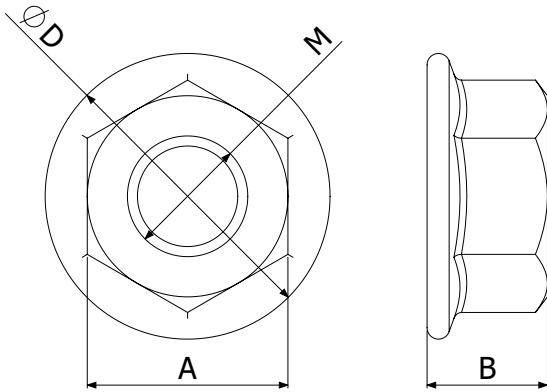


CHARACTERISTICS



Products: M6; M8; M10.

Finishes: Electroplated, HDG; ss304.

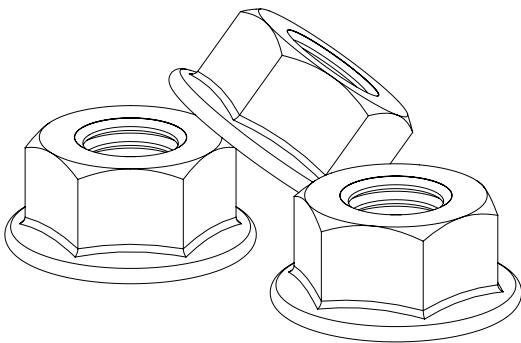
Characteristics:

- Hexagon Nut (mounting wrench) with flange washer.

Dimensions:

MODEL	M(mm)	D (mm)	A (mm)	B (mm)	T (N-m)
M6	6	14,2	10	6	8
M8	8	17,9	13	8	15
M10	10	21,8	15	10	35
M12	12	26	18	12	40

USE INSTRUCTIONS



- Hexagon Nut with splined washer is mounted with wrench. This type of washer is latched on the pressure surface thus preventing the assembly from loosening over time.
- Our packs bolt sets B1, B2 and B3 incorporate this kind of nuts.
- Are also used for mounted supports with threaded rod.